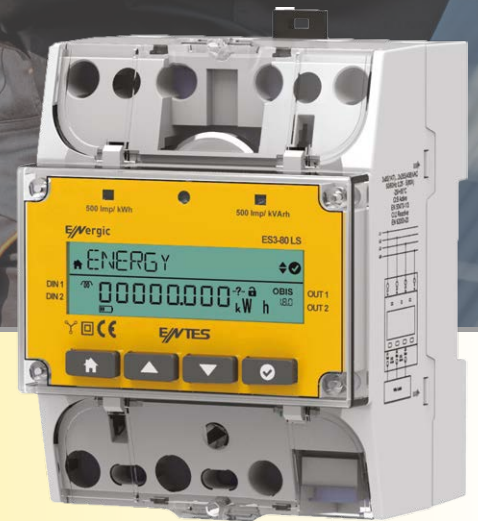




Meet the flexibility of remote monitoring with **ENTES 3-Phase Energy Meters**



## ES3 Series

3 Phase 4 Quadrant  
Energy Measurement

Remote Monitoring

MID Compatible

8 Tariff Measurement

Terminal Cover  
Opening & Log Record

Pulse Counter



[www.entes.eu](http://www.entes.eu)

   / enteselektronik

## SPECIFICATIONS

	ES3-63LS	ES3-080LS	ES3-63LSE	ES3-80LSE
<b>SUPPLY</b>				
Power Supply	From the Measurement Input			
Power Consumption	<10VA			
<b>MEASUREMENT</b>				
Accuracy	Class B (EN -50470-1)			
Voltage Range	85-265V			
Current Range	0,02-63A	0,02-80A	0,02-63A	0,02-80A
Active Energy Measurement Class	Class B (EN-50470-1)			
Reactive Energy Measurement Class	Class 2 (EN-62053-23)			
Max Current	63A	80A	63A	80A
<b>PULSE</b>				
Active Energy Counter Constant	500imp/kWh			
Reactive Energy Counter Constant	500imp/kVarh			
Active Energy Pulse Indicator	Red LED			
Reactive Energy Pulse Indicator	Red LED			
<b>COMMUNICATION</b>				
Ethernet	-	-	●	●
RS-485	●	●	-	-
<b>RECORDINGS</b>				
Internal Memory	16MB			
Demand Time	Adjustable 1-60 minutes			
Log Time	Adjustable 1/2/5/10/15/20/30/60 minutes			
<b>TARIFF</b>				
Number of Tariff	8			
Time Clock Accuracy	±0.5 h/day			
<b>INPUTS and OUTPUTS</b>				
Number of Digital Inputs	2			
Digital Input Voltage Range	5-24VDC 30 Vmax			
Number of Digital Output	2			
Digital Output Voltage Range	5-24VDC 30 Vmax			
Digital Output Current Max.	30mA			
Pulse Rate	Adjustable 1/10/100/1000/10000/100000/1000000 W/VA/Var h/imp			
<b>BATTERY</b>				
Battery (For RTC)	Interchangeable CR 2032			
Battery Life	10 Years			
<b>DISPLAY</b>				
Energy Display	7+1 Digits			
<b>ENCLOSURE</b>				
Dimension	DIN4			
Protection Class	Terminal: IP20, Front panel: IP51			
Display	Segment LCD			
Button	4 x Universal Interface			
<b>CONNECTIONS</b>				
Mounting	Rail			
<b>TERMINAL STRUCTURE</b>				
Main Terminal Wire Cross Section	2,5-25mm <sup>2</sup>	2,5-25mm <sup>2</sup>	2,5-25mm <sup>2</sup>	2,5-25mm <sup>2</sup>
Digital Input Cable Cross Section	1,5mm <sup>2</sup>	1,5mm <sup>2</sup>	1,5mm <sup>2</sup>	1,5mm <sup>2</sup>
Digital Output Cable Cross Section	1mm <sup>2</sup>	1mm <sup>2</sup>	1mm <sup>2</sup>	1mm <sup>2</sup>
Communication Cable Cross Section	1,5mm <sup>2</sup>	1,5mm <sup>2</sup>	RJ45	RJ45
<b>AMBIENT CONDITION</b>				
Operating Temperature	-25 - +55°C			
Storage Temperature	-30 - +80 °C			
Maximum Ambient Humidity	%95, Non-Condensing			
<b>STANDARDS</b>				
Standards	EN 50470-1, EN 50470-3, EN 62053-23, EN62053-61, EN 62054-21			

### HEADQUARTERS

Address: Dudullu OSB; 1. Cadde; No: 23 34776 Umraniye - ISTANBUL / TURKIYE Tel: +90 216 313 01 10 Fax: +90 216 314 16 15 Sales Fax: +90 216 365 71 71  
E-mail: contact@entes.eu Web: www.entes.eu Call Center Technical Support: 0850 888 84 25 Coordinates: 40,995852 N, 29,178398 E

### INTERNATIONAL BRANCH OFFICES

ISTANBUL : contact@entes.eu Tel: +90 216 313 01 10 Fax: +90 216 314 16 15  
INDIA : contact@entes.in Tel: +91 981 - 2980004  
GREECE : contact@entes.eu Tel: +30 2310 706999 +30 2310 707296  
GERMANY : kontakt@enteselektronik.com Tel: +49(0) 7022-931992-0

© ENTES Elektronik Cihazlar İmalat ve Ticaret A.Ş.

