

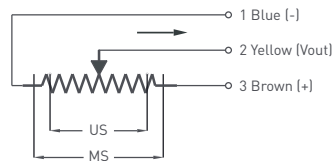
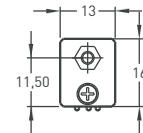
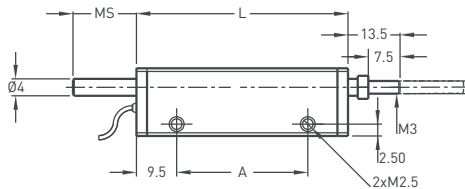
- Measuring range 10 - 25 mm
- <0.01 mm repeatability
- Infinite resolution
- 2 kOhm : 10 - 25 mm



Technical Specifications

Measurement stroke	10 - 25 mm
Linearity	±%0,5 (<75 mm)
Repeatability	< 0.01 mm
Resolution	Infinite
Resistance	2 kOhm : 10 - 25 mm
Resistance tolerance	± %20
Load resistance	100 kOhm min.
Recommended wiper current	<1 µA
Permissible applied voltage	28 VDC max.
Electrical connections	Cable output
Displacement speed	< 5 m/s
Mechanical life	50 million movement
Case dimensions	13 mm x 16 mm
Case material	Anodized aluminium
Rod material	Stainless steel
Rod diameter	Ø4 mm
Mechanical fixing	Screw
Protection level	IP 54
Operating temperature	-20°C ... +80°C
Storage temperature	-30°C ... +90°C

Mechanical Specifications



LMT (mm)	10	14	25
US (Usefull stroke)	10	14	25
MS (Mechanical stroke)	12	15	27
A (Connection center)	26	31	41
L (Total length)	45	50	60

Ordering Procedure

Model	Measurement stroke (mm)	Linearity (%)	Resistance (kOhm)	Cable
LMT	25	D	2K	0M15
LMT	10 - 25 mm	D : ±%0,5 (<75mm)	2 kOhm : 10 - 25 mm	0M15 : 0.15 meter cable(standard) 1M : 1 meter cable